



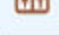
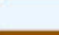


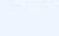


Welcome Lake Wenatchee North Sno-Park Groomed Trail System

Winter 2008 / 2009

Explanation

-  Non-Motorized Sno-Park
-  Groomed Ski Trail
-  Designated Snowshoe Trail
-  Snowshoe Route if Sufficient Snow Depth
-  Restroom
-  Highway
-  Sno-Park Access Road
-  Park Boundary
-  Special Grooming Permit Required
(Available at Parkside Grocery and Midway Grocery on SR 207)

Lake Wenatchee State Park & Chiwawa have 21 kilometers of groomed cross country ski trails, and 8 km of designated snowshoe trails. Distance labeled between intersections.

Kilometers

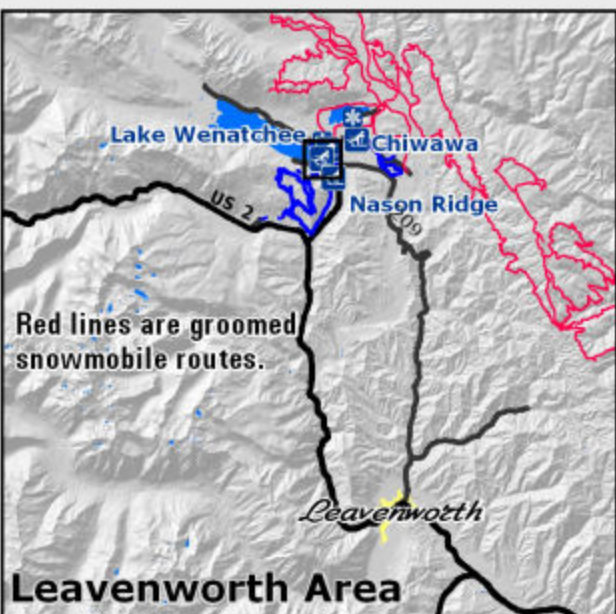
Snow grooming equipment may be on the trail at any time.

Trail grooming schedules may change without notice due to snow conditions, temperatures, equipment breakdowns, etc.

Be aware of potential avalanche danger, check www.nwac.us before you leave home.

*Trail grooming schedules and maps at www.parks.wa.gov/winter
Please report errors or comments to: winter@parks.wa.gov*

**For Emergency Call 911
Chelan Co. Sheriff 509-663-9911 or
Lake Wenatchee SP 509-630-0038**



Trails groomed with a skate lane (North Park only) and set track both North & South. All are rated Easiest with occasional steep sections.

PLEASE REMEMBER:

**No dogs or snowshoes on groomed track.
Do not walk on the groomed trail.
Downhill skiers have the right of way.
Trails may become more difficult during icy conditions.**

