

# Welcome Chiwawa Sno-Park Groomed Trail System

Winter 2008 / 2009

## Explanation

- Non-Motorized Sno-Park
- Groomed Ski Trail
- Marked Ski Route
- Groomed Snowmobile Trail
- Sno-Park Access Road
- View
- Special Grooming Permit Required, Purchase at Parkside Grocery or Midway Grocery.

Lake Wenatchee State Park and Chiwawa have 21 kilometers of groomed cross country ski trails. Trail name and distance labeled between intersections.

Kilometers  
 Road Number  
 Miles

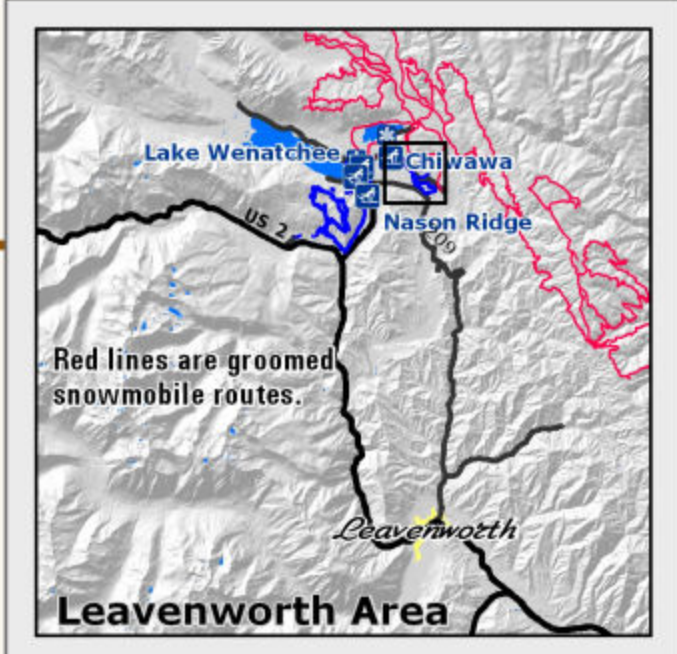
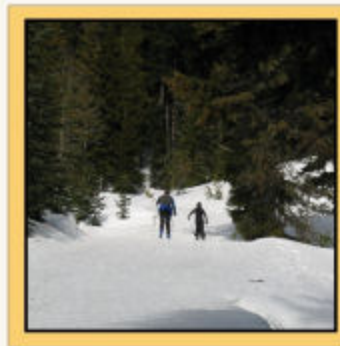
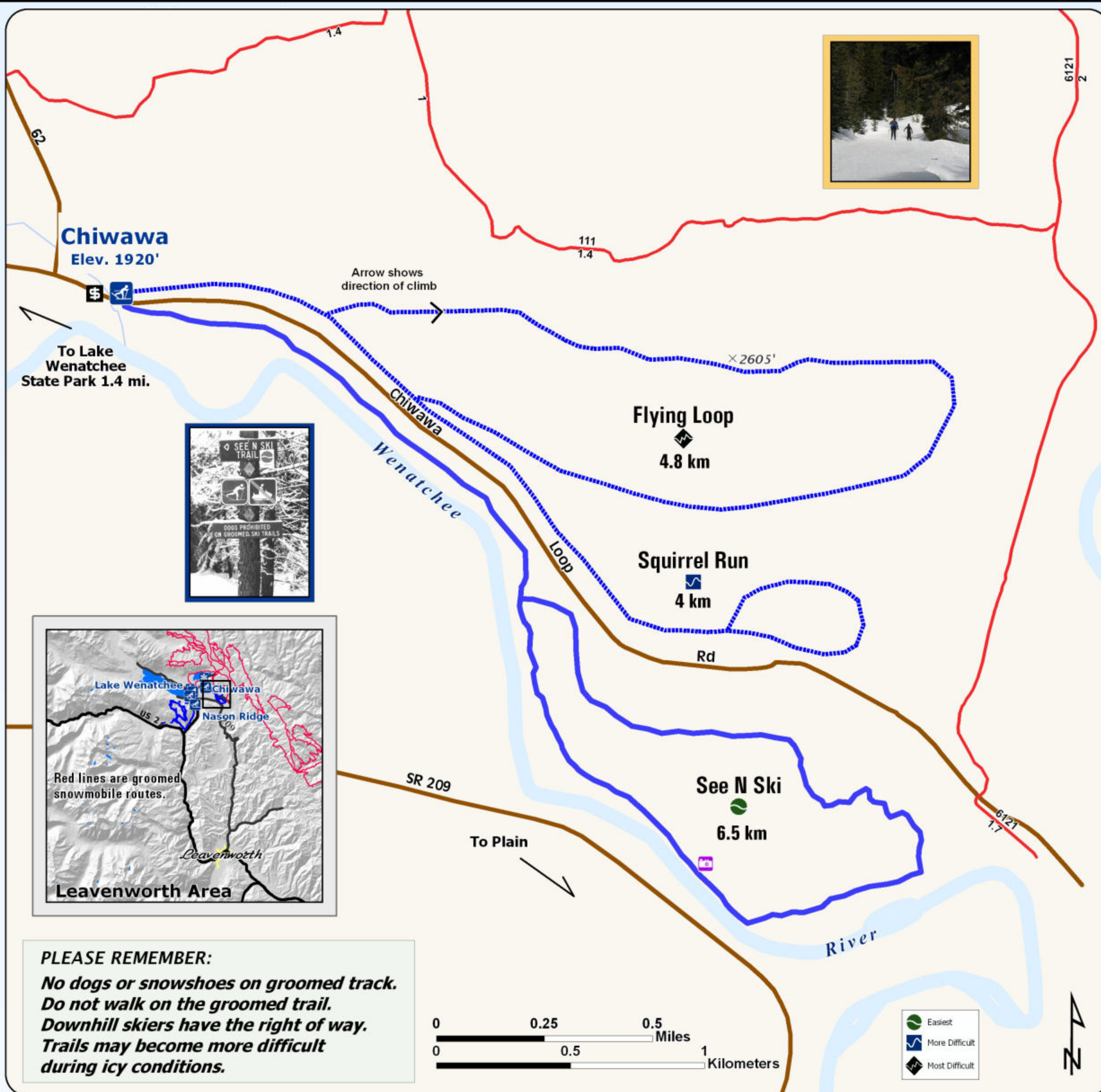
*Snow grooming equipment may be on the trail at any time.*

*Trail grooming schedules may change without notice due to snow conditions, temperatures, equipment breakdowns, etc.*

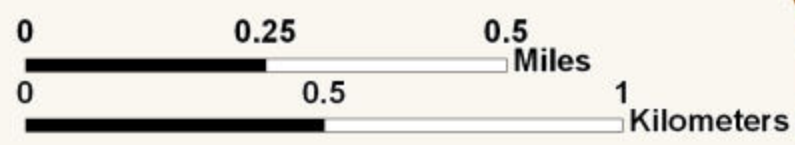
*Be aware of potential avalanche danger, check [www.nwac.us](http://www.nwac.us) before you leave home.*

*Trail grooming schedules and maps at [www.parks.wa.gov/winter](http://www.parks.wa.gov/winter)  
Please report errors or comments to: [winter@parks.wa.gov](mailto:winter@parks.wa.gov)*

**For Emergency Call 911  
Chelan Co. Sheriff 509-663-9911 or  
Lake Wenatchee SP 509-630-0038**



**PLEASE REMEMBER:**  
**No dogs or snowshoes on groomed track.**  
**Do not walk on the groomed trail.**  
**Downhill skiers have the right of way.**  
**Trails may become more difficult during icy conditions.**



- Easiest
- More Difficult
- Most Difficult



**Chiwawa**  
Elev. 1920'

To Lake Wenatchee State Park 1.4 mi.

Arrow shows direction of climb

**Flying Loop**  
4.8 km

**Squirrel Run**  
4 km

**See N Ski**  
6.5 km

Chiwawa  
Wenatchee

To Plain

SR 209

111  
1.4

6121  
2

6121  
1.7

× 2605'

1.4